

AVAILABLE FOR LEASE

Santa Ana Business Center

INDUSTRIAL / FLEX UNITS

1800-1856 East Carnegie, Santa Ana, CA



Property Features:

- ± 1,600 – 7,500 SF industrial / flex units
- Located within Irvine Business Complex
- Quality business park / well maintained
- Ample surface-free parking
- Ground level loading doors
- Drive around access
- 16' clear height
- Excellent access to 5, 405 & 55 Freeways



BroadStreet
REAL ESTATE GROUP

TROY A. WOOTON

twooton@broadstreetre.com
Broker License # 01377431
(949) 242-5210 x1

ZAC D. FIELDER

zfielder@broadstreetre.com
Salesperson License # 01989549
(949) 242-5210 x2

CHAS W. LEEPER

cleeper@broadstreetre.com
Salesperson License # 01921208
(949) 242-5210 x3

AVAILABLE FOR LEASE

Santa Ana Business Center

INDUSTRIAL / FLEX UNITS

1800-1856 East Carnegie, Santa Ana, CA



1800-1826 BUILDING

Available Spaces

1806 Carnegie ± 1,600 SF

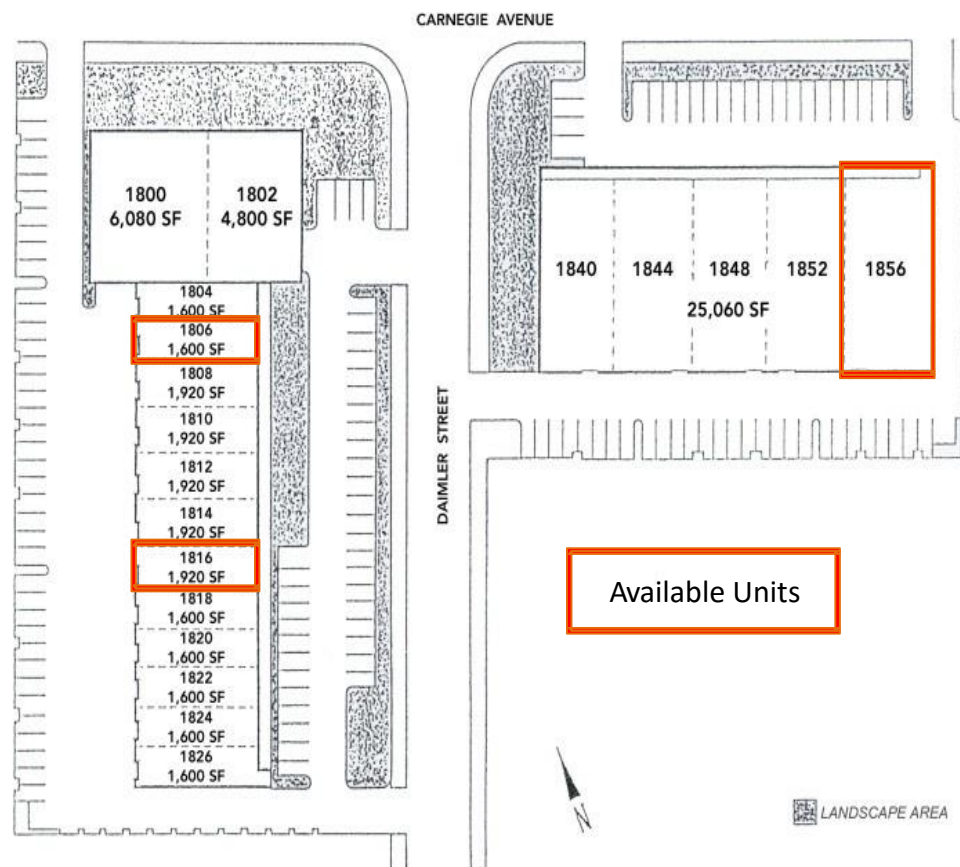
Approximately 650 SF of office with reception, 2 private offices, kitchenette, 1 restroom and approximately 950 SF of warehouse

1816 Carnegie ± 1,920 SF

Reception, 3 private offices, kitchenette, 1 restroom, warehouse, one ground level door

1856 Carnegie ± 5,720 SF

Approximately 1,900 SF of office w/reception, three (3) windowed offices, approximately 60% warehouse with ground level door



AVAILABILITY & SITEPLAN



BroadStreet
REAL ESTATE GROUP

TROY A. WOOTON

twooton@broadstreetre.com
Broker License # 01377431
(949) 242-5210 x1

ZAC D. FIELDER

zfielder@broadstreetre.com
Salesperson License # 01989549
(949) 242-5210 x2

CHAS W. LEEPER

cleeper@broadstreetre.com
Salesperson License # 01921208
(949) 242-5210 x3

AVAILABLE FOR LEASE

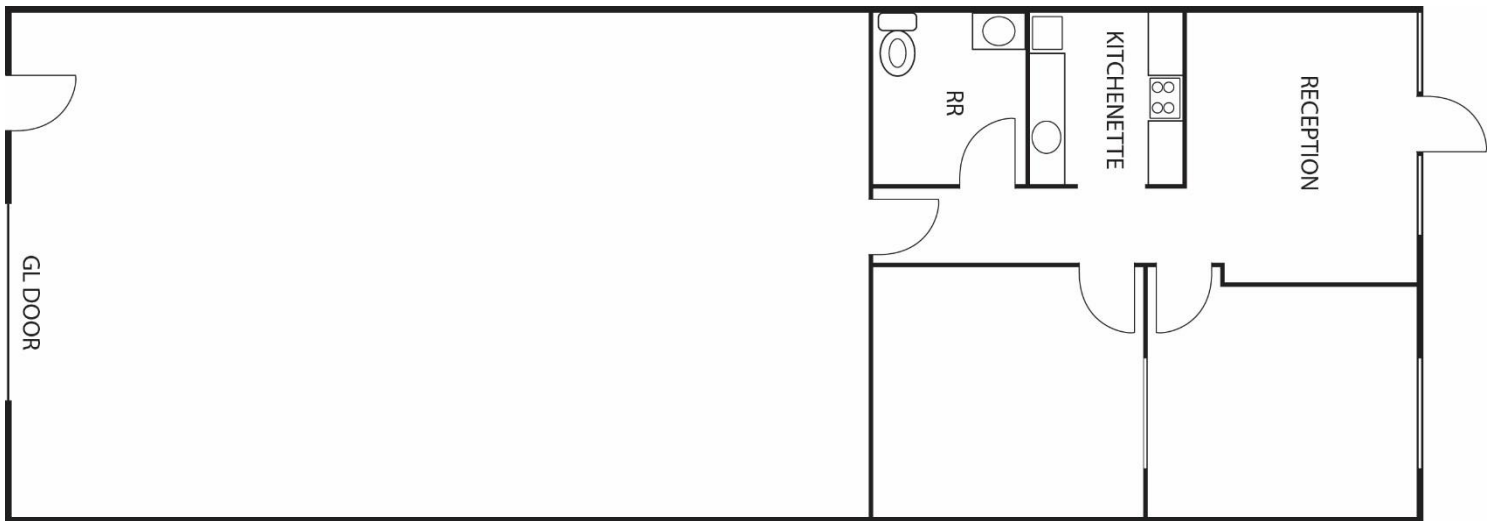
Santa Ana Business Center

INDUSTRIAL / FLEX UNITS

1800-1856 East Carnegie, Santa Ana, CA

1806

± 1,600 SF



1806

± 1,600 SF

Approximately 650 SF of office with reception, 2 private offices, kitchenette, 1 restroom and approximately 950 SF of dropped ceiling expandable office/R&D area that could also be converted back to 16' warehouse.



BroadStreet
REAL ESTATE GROUP

TROY A. WOOTON

twooton@broadstreetre.com

Broker License # 01377431

(949) 242-5210 x1

ZAC D. FIELDER

zfielder@broadstreetre.com

Salesperson License # 01989549

(949) 242-5210 x2

CHAS W. LEEPER

cleeper@broadstreetre.com

Salesperson License # 01921208

(949) 242-5210 x3

AVAILABLE FOR LEASE

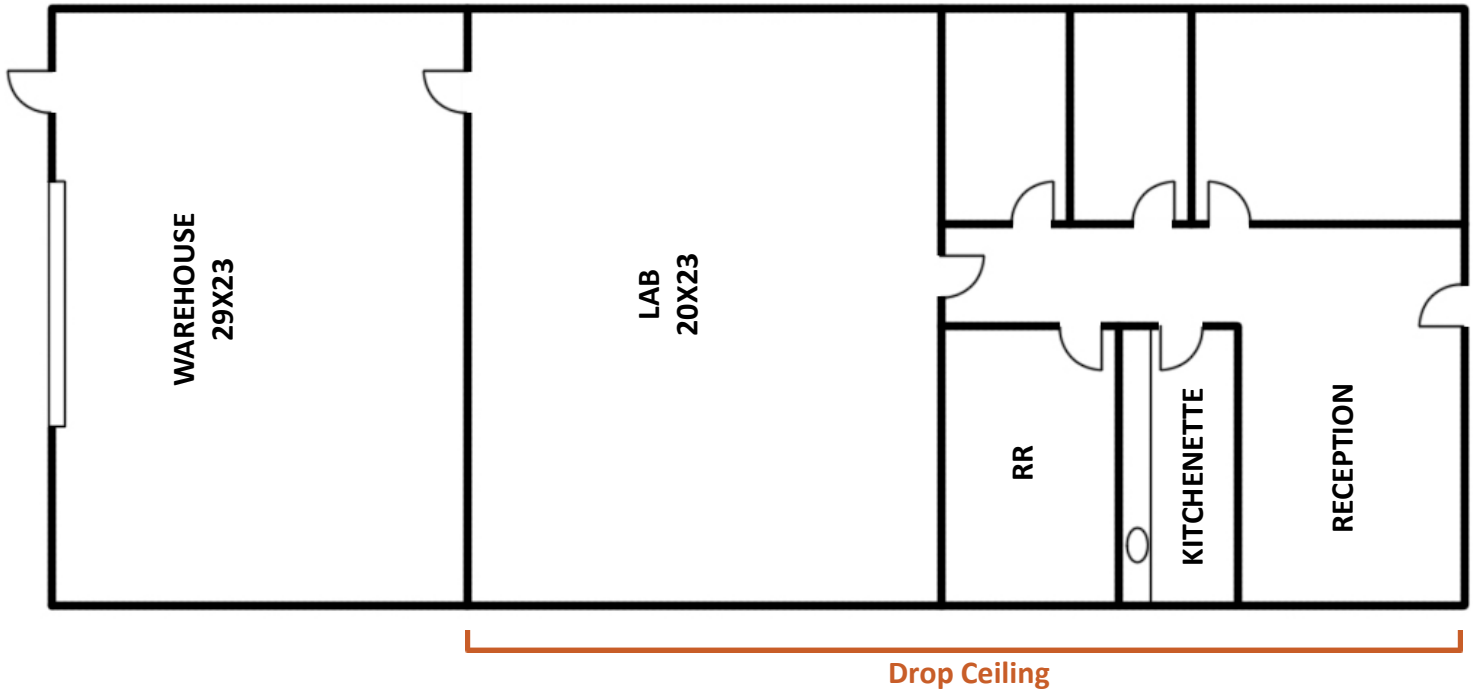
Santa Ana Business Center

INDUSTRIAL / FLEX UNITS

1800-1856 East Carnegie, Santa Ana, CA

1816

± 1,920 SF



1816

± 1,920 SF

Reception, 3 private offices, kitchenette, 1 restroom, warehouse, one ground level door



BroadStreet
REAL ESTATE GROUP

TROY A. WOOTON

twoon@broadstreetre.com
Broker License # 01377431
(949) 242-5210 x1

ZAC D. FIELDER

zfielder@broadstreetre.com
Salesperson License # 01989549
(949) 242-5210 x2

CHAS W. LEEPER

cleeper@broadstreetre.com
Salesperson License # 01921208
(949) 242-5210 x3

AVAILABLE FOR LEASE

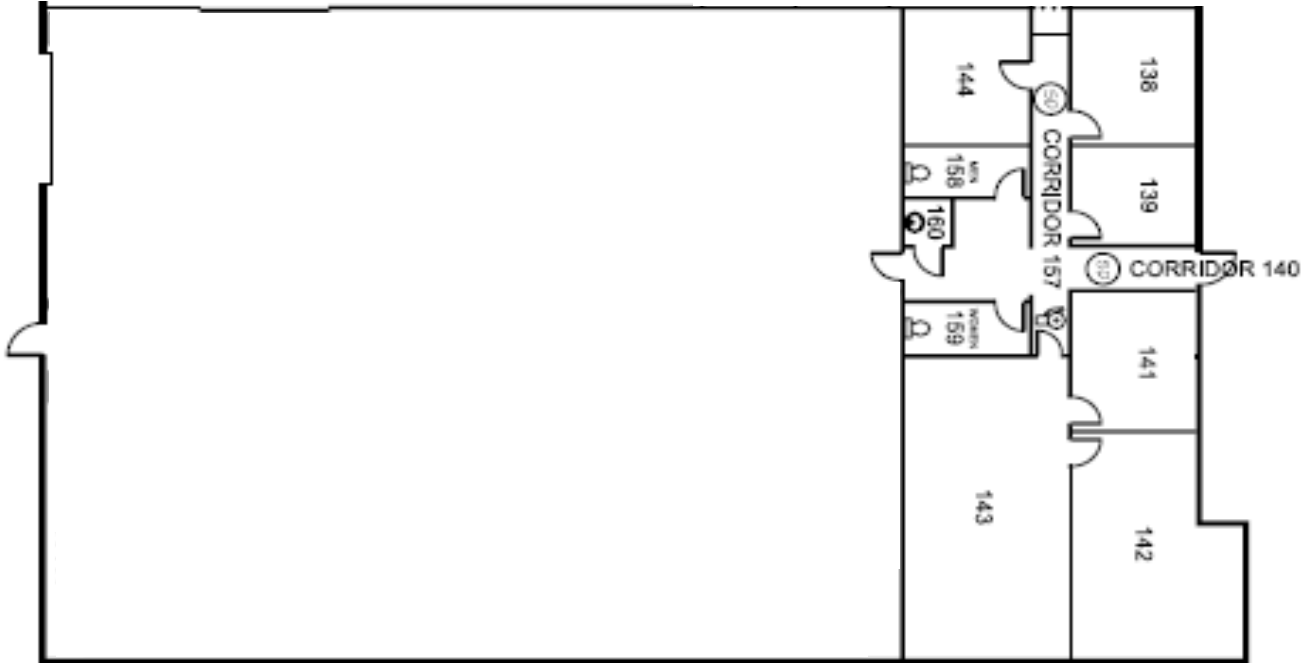
Santa Ana Business Center

INDUSTRIAL / FLEX UNITS

1800-1856 East Carnegie, Santa Ana, CA

1856

± 5,720 SF



1856

± 5,720 SF

Approximately 1,900 SF of office w/reception, three upgraded windowed offices, IT/storage room, approximately 60% warehouse with ground level door; Corner unit.



BroadStreet
REAL ESTATE GROUP

TROY A. WOOTON

twooton@broadstreetre.com

Broker License # 01377431

(949) 242-5210 x1

ZAC D. FIELDER

zfielder@broadstreetre.com

Salesperson License # 01989549

(949) 242-5210 x2

CHAS W. LEEPER

cleeper@broadstreetre.com

Salesperson License # 01921208

(949) 242-5210 x3