

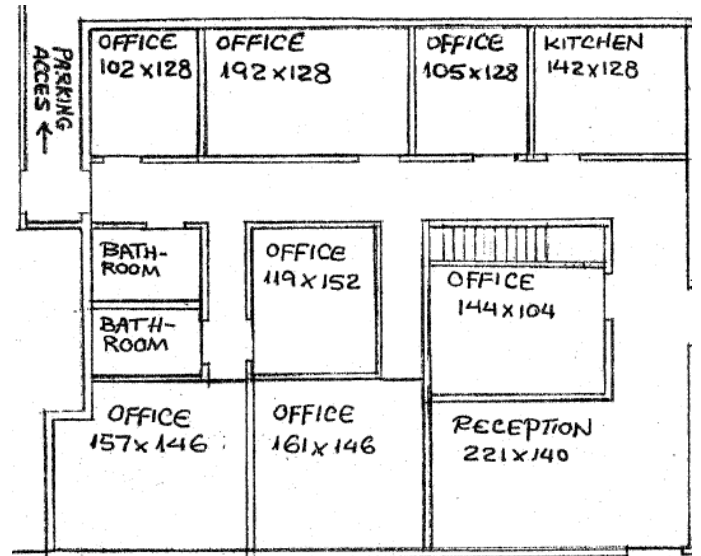
301-311 Civic Center Dr. SUITE 309 | 2,050sf



PROPERTY FEATURES

- ±2,050 square foot office space
- 7 private offices
- Kitchen
- Reception area
- Two bathrooms
- Direct parking access
- 600 square feet of bonus basement storage
- Walking distance from the Santa Ana Civic Center and Downtown Santa Ana with multiple restaurants
- Great access to 5, 55 and 22 freeways

FLOOR PLAN



EXCLUSIVE ADVISORS:

TROY A. WOOTON
License #01377431
twooton@broadstreetre.com
949.242.5210 x1001

ZAC D. FIELDER
License #01989549
zfielder@broadstreetre.com
949.242.5210 x1002



BroadStreet
REAL ESTATE GROUP

www.broadstreetre.com

301-311 Civic Center Dr. SUITE 309 | 2,050sf



LOCAL AREA MAP



EXCLUSIVE ADVISORS:

TROY A. WOOTON
License #01377431
twooton@broadstreetre.com
949.242.5210 x1001

ZAC D. FIELDER
License #01989549
zfielder@broadstreetre.com
949.242.5210 x1002



BroadStreet
REAL ESTATE GROUP

www.broadstreetre.com